

# Southern Inyo Healthcare District

Pursuing healthcare excellence with a compassionate heart

---

## Informational Booklet



View a digital  
version of this  
booklet at  
[www.sihd.org](http://www.sihd.org)



# About Us

Southern Inyo Local Healthcare District is dedicated to maintaining and improving health of residents and visitors of the District through a coordinated health program, including acute inpatient and outpatient services, skilled nursing, education, referral services, and recruitment of health care personnel, with the support of the Citizens in Support of Southern Inyo Hospital, the Inyo County Supervisors, and the voters within the Southern Inyo Healthcare District boundaries.

Southern Inyo Hospital is located in the town of Lone Pine, which sits at the foot of Mt. Whitney and the world renowned Alabama Hills. Lone Pine is a destination for hikers, climbers, mining and film history buffs, hunters, fishermen, back-country skiers, hang-gliders, photographers, and many others who enjoy astonishing natural beauty and a peaceful, tight-knit small town atmosphere.

Southern Inyo Hospital is a critical access hospital, which means that it is the only hospital serving the area, with at least 60 miles between it and the next closest Emergency Room. As well as providing emergency medical services, Southern Inyo Healthcare District is always striving to expand medical care as much as possible in order to best serve the community. Please review this booklet for information about our services.

At Southern Inyo Healthcare District, we provide quality care, close to home. Call 760-876-5501 today for more information, or visit our website, [www.sihd.org](http://www.sihd.org).



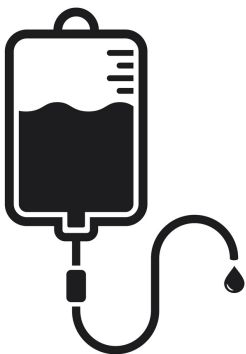
# Our Services

## Acute Care and Swing Beds

Southern Inyo Hospital has acute and swing beds for care and monitoring of moderately ill patients. Medical service is provided by on-call physicians, and recent upgrades have allowed more patients to stay longer, rather than be transferred to out-of-town hospitals, far from the comforts of home and family.

## Emergency Room

Our Emergency Room is open 24 hours per day, 7 days per week, and is the only E.R. within at least 60 miles in any direction; thus designating SIH a critical access hospital.



## Infusion Treatments

Infusion therapy is offered at Southern Inyo Hospital by our kind and experienced team of Registered Nurses.

Treatments include:

- Hydration infusions
- Blood product infusions and phlebotomy
- Antibiotic infusions
- Oncology infusions (chemotherapy)

## Laboratory

The Southern Inyo Hospital Clinical Laboratory is a 24/7 full service clinical laboratory accredited by the Commission on Office Laboratory Accreditation and proficiency testing is done through the American Proficiency Institute three times each year. The lab is easily accessible inside the hospital and is a five minute walk from the clinic, making it a convenient option for same-day testing.



## MAT Program for Opioid Dependency

SIHD offers a Medication-Assisted Treatment (MAT) Program for those struggling with opioid dependency, as well as harm reduction kits for those in need to lower the risk of overdose. Our compassionate team of providers are committed to healing your community by offering help and hope to those suffering from addiction. The SIHD MAT program is offered through the Southern Inyo Rural Health Clinic.



---

## Mobile Clinic

For those in remote areas who are lacking a reliable mode of transportation, or have any other barriers to visiting our medical centers to receive care, SIHD offers a mobile clinic to improve health outcomes and quality of life for people throughout Southern Inyo county. If you can't get to SIHD for care, our experienced team of healthcare providers will come to you.



---

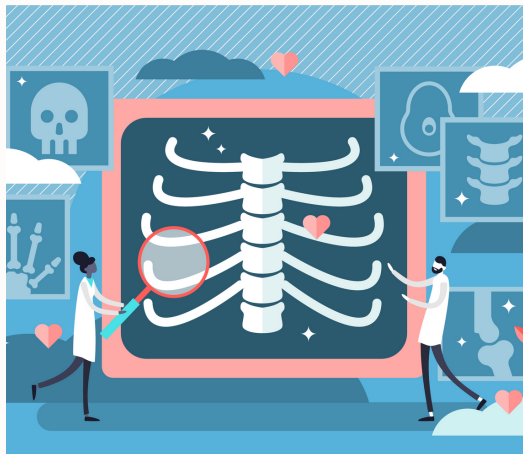
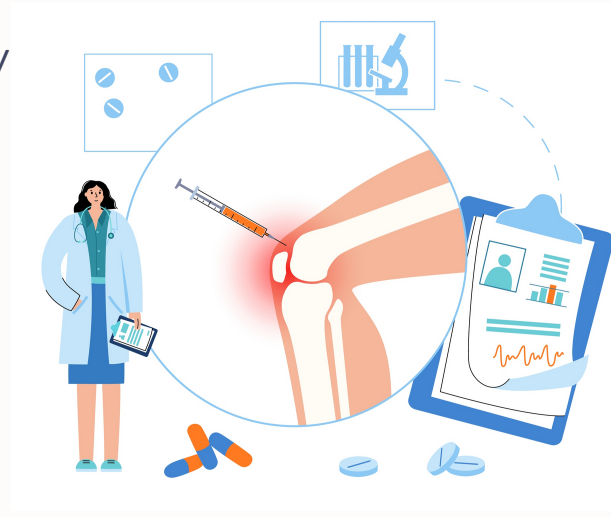
## Rehabilitation

Our Rehabilitation department prides itself in providing the best quality care in your hometown. Our skilled, highly qualified Physical, Speech, and Occupational therapists are experienced in working with children, adolescents, and adults with a variety of neurological, developmental, and orthopedic conditions. Patients are treated in both inpatient and outpatient settings; and for acute, short-term rehabilitation, as well as long-term care.



## Regenerative Medicine

Southern Inyo Hospital offers regenerative medicine treatments for osteoarthritis, inflammatory arthritis and bursitis, as well as tennis elbow, shoulder and knee pain; which can help avoid the need for invasive surgery or addictive pain killers. PRP (platelet-rich plasma) therapy is also offered through the SIH Regenerative Medicine Program, which is a powerful treatment for the healing of injured tendons, ligaments, muscles, and joints. Additionally, treatments for headaches and migraines are available, such as Botox® injections.



## Radiology

Southern Inyo Hospital offers a broad range of diagnostic imaging services, including:

- X-Rays
- CT Scans
- General, OB, Vascular, and Cardiac Ultrasounds
- Echocardiograms
- Diagnostic Radiography

## Rural Health Clinic

The Southern Inyo Rural Health Clinic is conveniently located across the street from Southern Inyo Hospital, and is staffed with experienced physicians who offer various types of health care, including:

- General and family practice
- Diabetes management
- Pediatrics
- Podiatry
- Psychiatry



## Skilled Nursing Facility

Located in the shadow of the spectacular Sierra Nevada mountain range, the Southern Inyo Hospital Skilled Nursing Facility provides personalized care to residents from all backgrounds. Our thirty-three bed facility is licensed by the California Department of Health Services and located within the hospital. In addition to nursing care, SNF residents have access to all other hospital services, as well as dental services, a dietary department, hospice care, a daily activity program, social services, and access to a beauty shop and laundry services. SIH also offers transportation for resident medical appointments in Bishop and Ridgecrest. Resident facilities include a picturesque central patio and resident park area with views of Sierra granite peaks.

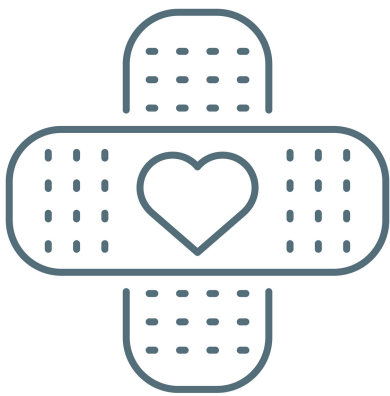


---

## Wound Care

Southern Inyo Healthcare District has partnered with UC Davis to build a high quality Wound Care program in Lone Pine, CA. Our providers are able to develop a comprehensive treatment plan for patients with all types of wounds, including:

- Burns
- Insect bites
- Diabetic ulcers
- Pressure ulcers
- Traumatic wounds
- Surgical wounds
- Venous insufficiency



# Let's Connect



Address:

501 E. Locust St. - P.O. Box 1009

Lone Pine, CA 93545

Rural Health Clinic Address:

510 E. Locust St.

Lone Pine, CA 93545

Phone: 760-876-5501

Rural Health Clinic Phone: 760-876-1146

Fax: 760-264-4292

[www.sihd.org](http://www.sihd.org)



@southernnyohealthcare

# Directory

Southern Inyo Hospital: 760-876-5501

Southern Inyo Rural Health Clinic: 760-876-1146

## By Department:

Administration: 760-876-2210

Admitting: 760-876-2242

Human Resources: 760-876-2212

Laboratory: 760-876-2238

Patient Financial Services: 760-876-2000

Radiology: 760-876-2230

Rehabilitation: 760-876-2264

Skilled Nursing Facility: 760-876-2240

Wound Care: 760-876-2234